

Quanta Hall  
Venue Technical Data

Version 4.6

# Catalogue

## **Basic Data.....4**

Venue

Contact

Transport

## **Stage Equipment.....5**

Stage

Loading Gate

Other Equipments

Reminder of Stage Working

## **Rigging System.....7**

Stage Flying List

Rigging Control Panel

Other Equipments

Reminder of Rigging System Operation

Curtain

Electric Clock Control System

Sound Reflector Board

## **Lighting Equipment.....11**

Lighting System

Dimmer Circuit System and Basic Equipment

Lighting Equipment List

Lighting Fixture Accessories

Other Equipments

<u>Reminder of Lighting Operation</u>	
<b>Sound and Video System.....</b>	<b>16</b>
<u>Effect of Architectural Acoustic</u>	
<u>Sound System</u>	
<u>Sound Equipment</u>	
<u>Intercom System</u>	
<u>Video System</u>	
<b>Public Area and Facilities.....</b>	<b>20</b>
<u>Dressing Rooms</u>	
<u>Storage</u>	
<u>Piano Room</u>	
<u>Vip Room</u>	
<u>Central Control Room</u>	
<u>Auditorium Seating</u>	
<u>Dressing Equipment for Performer</u>	
<u>Front Stage Lobby Facilities</u>	
<u>Front Stage Public Area</u>	
<u>Front Stage VIP Room</u>	
<b>Appendix 1.....</b>	<b>23</b>
<u>Stage Ground Plan</u>	
<b>Appendix 2.....</b>	<b>24</b>
<u>Section of Stage</u>	
<b>Appendix 3.....</b>	<b>25</b>
<u>3-1 : Photos of Stage</u>	
<u>3-2 : Photos of Lighting Control Room</u>	

3-3 : Photos of Sound Control Room

3-4 : Photos of Public Area

3-5 : The Auditorium

3-6 : Loading Space

3-7 : Panels and Equipment Room

## Basic data

### Venue

Quanta Computer-Quanta Hall

Tel: +886 (0)3 327 2345

Address: No.211, Wenhua 2nd Rd., Guishan Township, Taoyuan County 333, Taiwan

Website: <http://www.qaf.org.tw>

### Contact

Department	Responsible	Telephone	Email
Administrative Department of Quanta Arts Foundation	Han-wen Cheng	+886 (0)3-327-2345 extention:11265 +886 (0)972-062-591	<a href="mailto:heidi.cheng@quantatw.com">heidi.cheng@quantatw.com</a>
Technical management: Tai He Arts Production Co.	Vincent Cheng	+886-(0)2-2557-7275 +886 (0)918-569-901	<a href="mailto:taihearts@gmail.com">taihearts@gmail.com</a>

### Transport

For further information, please see the quanta computer website:

<http://www.Quantatw.Com/Quanta/Chinese/About/Qmap.Aspx>



## Stage Equipment

### Stage

The proscenium of the venue cannot be altered.

Maximum opening : 1521 cm (width) x 828 cm (height)

Proscenium Thickness: 49cm

Center apron to plaster line : 257 cm

Left apron to plaster line : 160 cm

Right apron to plaster line : 160 cm

Cyclorama(center) to plaster line : 1057 cm

Back wall of rear stage to plaster line : 2037 cm

Center apron to the auditorium back wall : 2632cm

Stage height : 84 cm

Stage floor to the top grid : 1028 cm

Center line to the stage right wall : 1587 cm

Center line to the stage left wall : 1592cm

Left side stage area : Minimum 662 cm ( width ) × 1500cm ( depth ) × 400cm ( height )

Maximum 806 cm ( width ) × 482cm ( depth ) × 400cm ( height )

Right side stage area : Minimum 671cm ( width ) × 1500cm ( depth ) × 400cm ( height )

Maximum 805cm ( width ) × 467cm ( depth ) × 400cm ( height )

There is no orchestra pit in quanta hall.

### Loading gate

Parking lot entrance : 300cm ( height ) × 600cm ( width )

Loading elevator entrance : 290cm ( width ) × 261cm ( height )

Loading elevator : 555cm ( length ) × 325cm ( width )

Load limit 2000 kg

## **Other equipments**

Caster platform for scenery transport: (3'× 6') x 4

(4'× 4') x 4

(4'× 8') x 2

PVC Dance floor x 16

Caster platform for dance floor transport x 3

## **Reminder of stage working**

Please don't nail or use twin adhesive on the stage floor.

It is not allowed to operate any equipment without the permission of the venue.

Smoking, drinking and eating are forbidden on the stage and the auditorium, performance group should keep the working space clean and neat. After the show, please help the venue to reset theatre equipment.

While the environmental control systems off, in the middle part of the auditorium seating will no electricity supply.

## Rigging system

Measure : cm

### Stage flying list

No	Batten	To PL	Length	Lowest point	Highest point	Max. load capacity (kg)	Position of Motor	Note
PL	PROCENIUM LINE	0	-	-	-	-	-	
#1	TEASER	10.5	-	-	-	100	Left	Fixed
#2	MAIN CURTAIN	30	1920	-	-	-	Left	Fixed (motor-driven)
#3	SCENERY BATTEN #1	64	900/900	123/117	1013/1011	250	Left/Right	Left/Right
#4	ELECTRIC #1	94	900/900	108/129	836/828	250	Left/Right	Left/Right
#5	SOUND REFLECTOR BATTEN #1	218	1920	111	939	250	Right	
#6	BORDER #1	278	1920	121	1005	250	Right	
#7	LEG/WING #1	297	1920	121	1025	250	Left	
#8	ELECTRIC #2	318	1920	118	817	250	Left	
#9	SOUND REFLECTOR BATTEN #2	473	1920	118	1019	250	Right	
#10	ELECTRIC #3	508	-	84	-	250	Left	
#11	BORDER #2	558	1920	120	1019	250	Right	
#12	LEG/WING #2	583	1920	120	983	250	Left	
#13	SCREEN	603	-	-	1017	-	Right	motor-driven

No	Batten	To PL	Length	Lowest Point	Highest Point	Max. load Capacity (kg)	Position of Motor	Note
#14	SOUND REFLECTOR BATTEN #3	687	1920	114	1005	250	Right	
#15	BORDER #3	732	1920	116	1022	250	Right	
#16	ELECTRIC #4	782	-	-	-	250	Left	
#17	BORDER #4	825	-	-	-	250	Left	
#18	LEG/WING #3	848	-	-	-	250	Right	
#19	ELECTRIC #5	876	-	-	-	250	Left	
#20	SOUND REFLECTOR BATTEN #4	945	1920	125	1006	250	Right	
#21	BACK CURTAIN	1105	1895	-	809	-		open manually
#22	SCENERY BATTEN #2	1030	1920	120	1020	250	Right	
#23	RP	1058	1905	-	821	250	Left	Fixed
#24	SCENERY BATTEN #3	1076	1920	119	1018	250	Right	

## Rigging control panel

All the battens are controlled by electric control system; a touch panel is located at the left stage. Every batten can be lifted up or tilt down to its highest or lowest point, and also can be halted at any point with height display. But the system can neither set up nor memorize a certain height. It is also not possible to adjust the rate of movement.

## Other equipments

Iron bottom pipes for leg x 10

Iron bottom pipes for border x 4

Iron bottom pipes for additional curtain on empty batten x 2

## **Reminder of rigging system operation**

It is forbidden to stick any subject on curtains, on the reflective board and on other house equipment. When operating the rigging system, please check the stage before moving any batten, and make sure everyone is aware of the coming movement. The Electric batten cannot be adjusted lift

## **Curtain**

The main curtain, border, leg and back curtain are black flannelet, and have passed the anti-fire test.

Border : 1973cm (width) × 268cm (height) x 3

Leg : 215cm (width) × 800cm (height) x 3 (pair)

Back curtain size : 1000cm (width) × 825cm (height) x 1

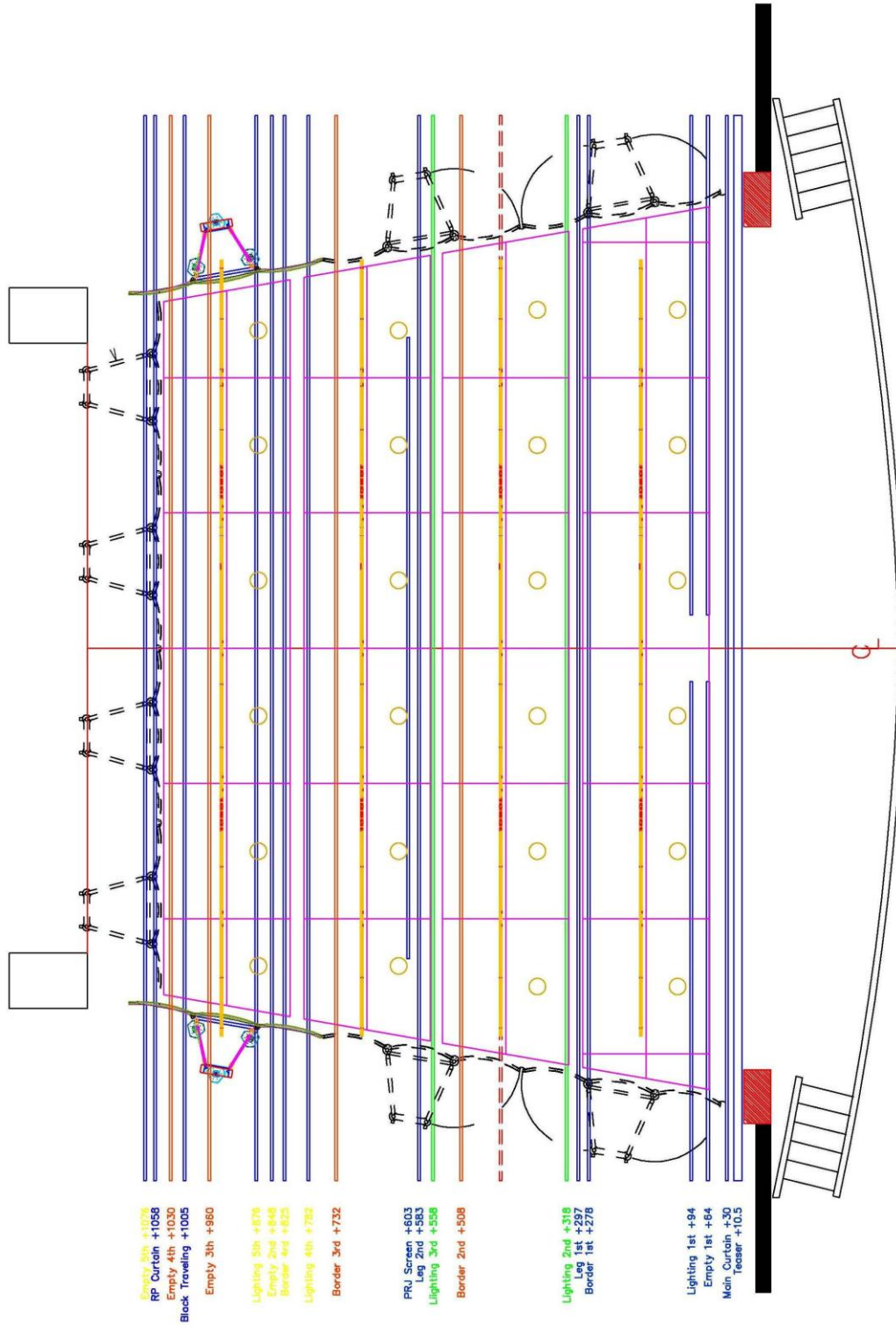
RP size : white , 1903cm(width) × 821cm(height) x 1 speed or memorize lift height.

## **Electric clock control system**

The electric control clocks are set on the right/left side of stage, group dressing room A/B, lighting control room, sound control room and central control room, which show real time with second and provided with countdown function.

# Sound reflector board

Color : Beige



# Lighting Equipment

## Lighting system

### Lighting Console (fixed)

Brand : ETC Ion with 2 x 10 wing

Monitor : View sonic 19"

Source : DMX 512

### Dimmer

Brand : Leviton I96e x2, 192 circuit in total

Voltage : 220V

DMX 512 lighting console boxes are equipped in the center of the 12<sup>th</sup> row of seat, both sides of stage and central control room on the first floor.

There is a dimmer source input box on the left upper stage and grid (close to the center of the first sound reflective board).

Sound reflector board button is also controlled by dimmer system

### Lighting control room

Lighting control room is on the right side in the second floor back of the auditorium, equipped with intercom and monitor system and electronic clock system.

### Follow room

Follow room is at the center of the second floor back of the auditorium, equipped with intercom and monitor system.

**Dimmer Circuit System and Basic Equipment (The Circuit No. not on the list are used for the House light system)**

Place		Circuit No.	Circuit Amount	Basic Equipment
First catwalk		13~24	12	ETC Source Four 19°×10 ETC Source Four 14°×2
Second catwalk		1~12	12	ETC Source Four 19°×10 ETC Source Four 14°×2
Left auditorium ladder		143~148	6	ETC Source Four 19°×4 ETC Source Four 26°×4
Right auditorium ladder		137~142	6	ETC Source Four 19°×4 ETC Source Four 26°×4
Left stage ladder		131~136	6	-
Right stage ladder		125~130	6	-
# 1 Lighting pipe	Left pipe	25~34	10	-
	Right pipe	35~44	10	-
# 2 Lighting pipe		45~62	18	-
# 3 Lighting pipe		149~166	18	-
# 4 Lighting pipe		63~80	18	-
# 5 Lighting pipe		81~88	8	-
Left upper stage		119~124	6	Input style: 3-PIN & Multi cable
Right upper stage		113~118	6	Input style: 3-PIN & Multi cable
Left stage proscenium wall		101~106	6	Input style: 3-PIN & Multi cable
Right stage proscenium wall		89~94	6	Input style: 3-PIN & Multi cable
Left stage wall		107~112	6	Input style: 3-PIN & Multi cable
Right stage wall		95~100	6	Input style: 3-PIN & Multi cable
Sound refl. Board Batten #1		167~168	2	ETC Source Four PAR
Sound refl. Board Batten #2		169~170	2	ETC Source Four PAR
Sound refl. Board Batten #3		171~172	2	ETC Source Four PAR
Sound refl. Board Batten #4		173~174	2	ETC Source Four PAR
Input style: 2P + G 3-PIN F plug				

## Lighting equipment List

Item	Model	Quantity	Bulb style	Note
750W ETC 14°	ETC Source Four414	4	750W/220V	
750W ETC 19°	ETC Source Four419	36	750W/220V	
750W ETC 26°	ETC Source Four426	32	750W/220V	
750W ETC 36°	ETC Source Four436	12	750W/220V	
ETC PAR	ETC Source Four PAR	16	1000W/220V	Lens size: Medium/ Narrow/ Very Narrow. Each X16
PAR64	PAR64 Wide	12	1000W/220V	
PAR64	PAR64 Middle	12	1000W/220V	
PAR64	PAR64 Narrow	12	1000W/220V	
2K Fresnel	2K Fresnel leviton	18	2000W/220V	
1KW CYC Light	1KW 4-Cells CYC Light	8	1000W/220V	

## Lighting fixture accessories

### Color filter frame

Item for Lighting equipment	size	Quantity
Par 64	8"	36
8" Fresnel :	25.5cm × 25.5cm	18
ETC Source Four 19°、26°、36°	16cm × 16cm	82
ETC Source Four 14°	29.5cm × 29.5cm	4
ETC Source PAR	19cm × 19cm	20
CYC Light	40cm × 30.5cm	32

## BARN DOOR

8" Fresnel x 12

## GOBO HOLDER, IRIS

Gobo Holder for ETC Source Four x 11

Iris for ETC Source Four x 19 (set)

## Cable

Multi Box x 8,

Multi Cable 10 M x 5,

Multi Cable 5 M x 6,

3-pin Ex-Cable 5 M x 2 2,

3-pin Ex-Cable 2 M x 2 0,

3-pin Ex-Cable Y - Cord x 2 0,

3-pin Pigtail x 6

## **Other equipments**

### Follow

Follow x 2, IMARC 850

Located in follow room

### Genie

32foot Genie AWP30 x 1

### Light transport and storing plaster

Load 24 PAR64 x2

Load 12 ETC Source Four x 1

### Side light accessory

Boom Bases and 2M zinc plating pipe x 8 set

\* Additional 20M zinc plating pipe x 12 and cheseborough x 48 are also available to assemble the side light ladder.

### Auxiliary power supplies

3φ4W 120/208V 300A

A Panel located at the left back stage.

It is required to coordinate the venue before any external use of electricity, using without permission is absolute forbidden.

### House Light Control

The house light can be controlled by its dimmer in lighting control room, through the Quanta environment control panel in sound control room, or by the panel at right stage.

## **Reminder of lighting operation**

When using lighting pipes or additional pipes, please mind the distance between pipes and curtains, be very cautious not to burn the curtains.

After using the follow light, it is necessary to leave the motor fan operating for about 10 minutes before shutting down.

Please use the upright correctly.

Powder Fog Machines Is Forbidden in the venue

In case of any extra lighting requirement other than the basic set up, please address during technical meeting.

## Sound and video system

### Effect of architectural acoustic

Whether the stage is in the form with scenery or with sound reflective board, the reverberation is less than 1 second through the actual measurement.

### Sound system

#### Mixing console

Brand and Model : DigiDesign Mix RACK  
19' screen、 keyboard and mouse included  
8×8matrix output Mat Fix digital processor

#### Auxiliary power supplies

3φ4W 120/208V 300A

- ✧ Panel is located in the room at left back stage. It is required to coordinate the venue before any external use of electricity, using without permission is absolute forbidden.

#### Sound control room

The sound control room is located in the left side of the second floor back of the auditorium, equipped with intercom and monitor system and electronic clock system.

#### Cable

3-pin cable for sound equipment:

8 M x 16 (blue-green)

5 M x 15 (yellow-white)

1 5 M x 9 (red)

Speaker cable: 8 M x 14 (blue)

## Sound Equipment

Item	Brand/Model	Quantity	Note
48+4input , 24output、 8matrix , Mixer	DIGIDESIGN MIX RACK	1	
CD recorder/player	TASCAM CD-RW900SL	1	
CD player	TASCAM CD-01U PRO	1	
240W/70Vor100V voltage-constant speaker power amplifier	Raditek P2-250	2	
Array main speaker	MEYER SOUND M'elodie	12	
Array bass speaker	MEYER SOUND 500HP	4	
Array speaker rack	MEYER SOUND MG-M'elodie	4	
Array speaker Equalizer	MEYER SOUND Gelileo616	1	
Front speaker	MEYER Stella-4C	4	
Stage monitoring speaker	RCF710	4	
Two way 12'stage monitoring/effect speaker	RCF712	4	
Two way 15'stage monitoring/effect speaker	RCF715	2	
Monitor speaker stand	Monitor Speaker Stand	8	
Sound control room monitor speaker	K + H O110	2	
Central/ lighting control room monitor speaker	K + H M52	4	
Voltage-constant speaker	NAW C600	34	
Voltage-constant radio speaker (VIP room/control rooms)	NAW SPB30	5	
Monitoring headset	SENNHEISER HD-280	2	
Lecture microphone	SENNHEISER ME35 + MZH3040	4	
Vocal microphone	SENNHEISER E835 S	4	

Item	Brand/Model	Quantity	Note
Instrument microphone	SENNHEISER E609	8	6 Guitar only microphone
Percussion microphone	SENNHEISER E604	4	
Hemisphere direction PZM microphone	SENNHEISER E901	2	
180° directoin PCC microphone	SENNHEISER E912	4	
XY record and monitoring microphone	SENNHEISER MKH418 S	1	
Hand wireless microphone	SENNHEISER EW535G2	4	
Mini microphone	SENNHEISER EW512G2	2	
Wireless receiver	SENNHEISER GA2	3	
Wireless receiver +external signal booster antenna	SENNHEISER A1031U + AB2	2	
Antenna signal distribution amplifier	SENNHEISER ASP2 + NT1	2	
Radio desk microphone	NAW CM16	1	
Desktop Microphone Stand	-	6	
Standard Microphone Stand	-	16	
Speaker monitoring motherboard	MEYER SOUND RMS	1	
1.5-2KVA UPS	Phoenixtec Power C3000RN	1	

### Intercom system

Item	Brand/Model	Quantity	Note
Double loop intercom main station	Clear-com MS702	1	
Single loop portable intercom sub-station	Clear-com RS601	6	3 Pin plug
Double loop portable intercom sub-station	Clear-com RS602	2	6 Pin plug
Sub-station microphone	Clear-com GM9	2	

Item	Brand/Model	Quantity	Note
Single ear headset (Double loop)	Clear-com CC-95	2	
Single ear headset(Single loop)	Clear-com CC-95	8	
B chain-double loop intercom sub-station panel	Clear-com WP-2	6	

## Video system

Item	Brand/Model	Quantity	Note
High-brightness projector	SANYO XF-47	1	15000 ANSI
400'electric screen	DA-LITE	1	
12×4RGBHVA configurator	KRAMER VP-1608	1	
22'LCD Monitor	Panasonic TC-22VPL	2	
250G DVD Hard disc record player	VITO HDD	1	
DVD player	Panasonic DV-300	1	

Currently is VGA circuit system equipped in the venue; however the following defects will be repaired as soon as possible: no signal at the L1 of the stage, chromatic aberration by the left input of the assistance computer.

### Cable

VGA cable: 5 M x 3

1.5 M x 1

## Public Area and Facilities

### Dressing Rooms

- ✧ Equipped with intercom and monitor system.(Group dressing room A & B are in addition equipped with electronic clock system)

#### Group dressing room (A)

Size : 1070cm ( length ) × 415cm ( width ) × 290cm ( height )

Separate dressing room x2

Size : 150cm ( length ) × 90cm ( width ) × 290cm ( height )

Wardrobe x 1

Size : 100cm ( length ) × 50cm ( width ) × 170cm ( height )

W.C. x 2

Shower room x 3

Size: for max. 21 people

#### Group dressing room (B)

Size : 830cm ( length ) × 413cm ( width ) × 290cm ( height )

Separate dressing room x2

Size : 150cm ( length ) × 90cm ( width ) × 290cm ( height )

Wardrobe x 1

Size : 100cm ( length ) × 50cm ( width ) × 170cm ( height )

W.C. x 2

Shower room x 3

Size: for max. 17 people

- ✧ Two hot-warm-cold drinking machines are equipped on the corridor outside the group dressing rooms.

#### Individual dressing room (A)

Size : 400cm ( length ) × 223cm ( width ) × 319cm ( height )

W.C. with shower x1

Size: for max. 2 people

#### Individual dressing room (B)

Size : 400cm ( length ) × 216cm ( width ) × 319cm ( height )

W.C. with shower x1

Size: for max. 2 people

#### Lounge

Size : 429cm ( length ) × 332cm ( width ) × 319cm ( height )

W.C. with shower x1

Size: for max. 4 people

### **Storage**

Size : 545cm ( length ) × 332cm ( width ) × 319cm ( height )

### **Piano room**

Size : 545cm ( length ) × 310cm ( width ) × 319cm ( height )

Piano brand and type: Steinway, Music Room Grand-Model B (For the use please apply with Quanta Arts Foundation)

Air-conditioned

### **VIP room**

#### Backstage VIP room

Size : 815cm ( length ) × 651cm ( width ) × 319cm ( height )

W.C. x 1

Tea room x1

Size: for max. 10 people

### **Central control room**

A projector is equipped in the central control room, which is located in the center of 1<sup>st</sup>

floor at the back of the auditorium.

Model: see video system

The central control room is also equipped with lighting and sound working desks and chairs.

## Auditorium Seating

Total seating: 576 seats. Two wheelchair seats are aside the No.19 and No. 20 of 12<sup>th</sup> row (right and left side of the center row).

## Dressing Equipment for Performer

	Quantity	Size / Color	Note
Movable hanger	12	120(W) x 55(D) x 180(H) /Black	
Portable quick change partition	12 (Piece)	4' x 8'	

## Front Stage Lobby facilities

Lobby seats x 4 set

## Front stage area

W.C is located at both side exits of the auditorium.

## Front stage VIP room

The VIP room is located at left side exits of the auditorium.

Size : 709cm ( length ) × 623cm ( width ) × 303cm ( height )

Facilities: W.C. x 1, Tea room x1

Size: for max. 8 people